

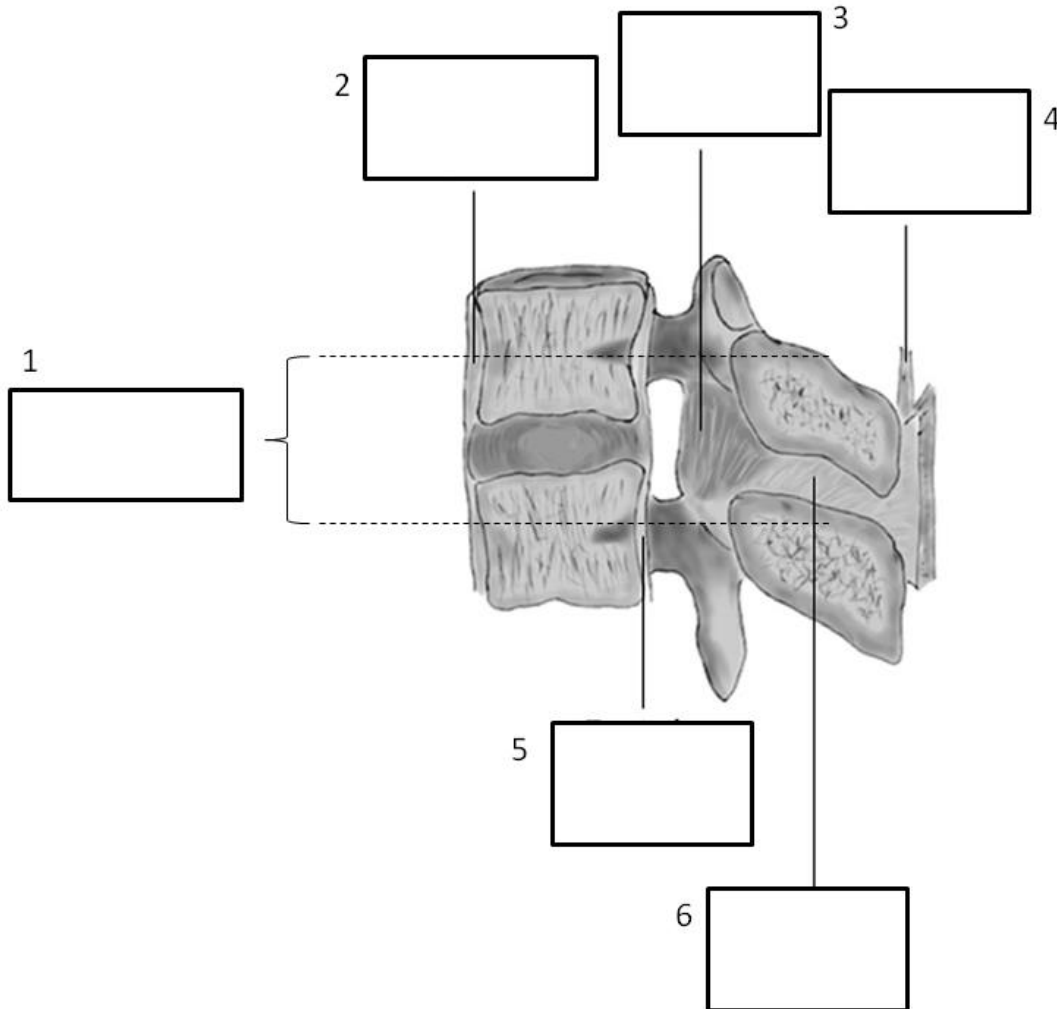
## MODULE BIOMECHANICS OF SPINE

### Didactic Unit A: Biomechanics of the normal spine

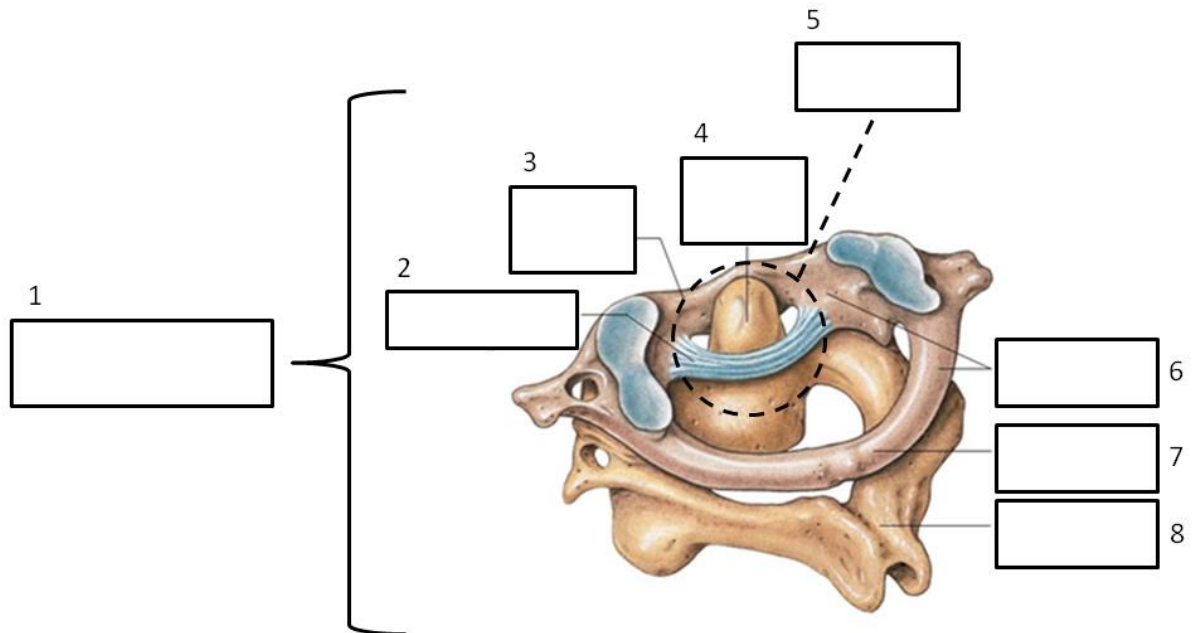
#### Activity 1

Fill in the boxes the name of the structure indicated or the missing information in the following images.

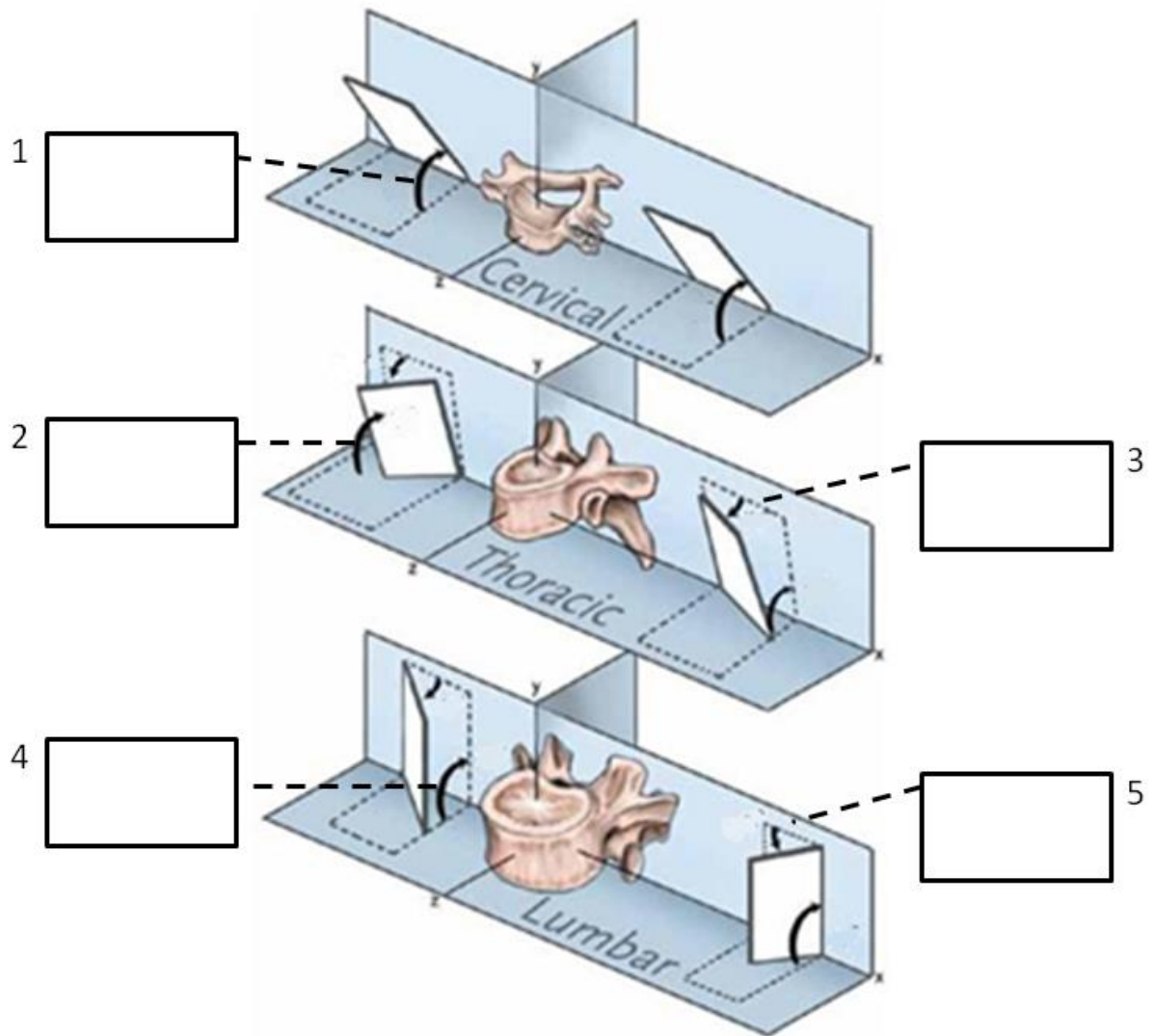
#### Image 1: Basic structures



## Image 2: Cervical spine



### Image 3: facet orientation



## Solutions (for teacher)

Image 1:

- 1) Functional Spinal Unit (FSU)
- 2) Anterior longitudinal ligament
- 3) Flavum ligament
- 4) Supraspinous ligament
- 5) Posterior longitudinal ligament
- 6) Interspinous ligament

Image 2:

- 1) Atlanto-axial complex
- 2) Transverse ligament
- 3) Anterior arch of the Atlas vertebra
- 4) Dens of Axis vertebra
- 5) Atlantodental joint
- 6) Atlas vertebra
- 7) Posterior arch of the Atlas vertebra
- 8) Axis vertebra, spinous process

Image 3:

- 1) 45°
- 2) 20°
- 3) 60°
- 4) 45°
- 5) 90°

The European Commission's support for the production of this publication does not constitute an endorsement of the contents, which reflect the views only of the authors, and the Commission cannot be held responsible for any use which may be made of the information contained therein.